

Computer Based Examination System

Exported On *	2022/06/27 13:10:13
Title *	Question Paper Answer Key
OES Exam *	GPSC01202217 / Technical Superintendent(Ports) / Completed / 2022-06-26

1	<b>Question Description</b>	Vertical support members used to strengthen bulkhead are called _____.
	<b>A</b>	Panels
	<b>B</b>	Brackets
	<b>C</b>	Stiffeners
	<b>D</b>	Beams
	<b>E</b>	None of the above
	<b>Correct Answer</b>	C
	<b>Marks</b>	1

2	<b>Question Description</b>	A multistage centrifugal pump is normally used
	<b>A</b>	High head
	<b>B</b>	High discharge flow
	<b>C</b>	High viscous fluids
	<b>D</b>	Low viscous fluid
	<b>E</b>	None of the above
	<b>Correct Answer</b>	A
	<b>Marks</b>	1

3	<b>Question Description</b>	An air compressor is equipped with an intercooler and an aftercooler to _____.
	<b>A</b>	inject water vapor into the compressed air
	<b>B</b>	prevent overheating of first stage valves
	<b>C</b>	increase compressor efficiency and economy
	<b>D</b>	reduce the compressed air charge density
	<b>E</b>	None of the above
	<b>Correct Answer</b>	C
	<b>Marks</b>	1

4

<b>Question Description</b>	One of the organisations that will declare a ship seaworthy after an accident is the _____
<b>A</b>	Ship's Agent.
<b>B</b>	Classification Society.
<b>C</b>	Charterer.
<b>D</b>	P&I Club
<b>E</b>	None of the above
<b>Correct Answer</b>	B
<b>Marks</b>	1

5

<b>Question Description</b>	A 16-cylinder diesel engine is operating at 75% load. All exhaust temperatures are between 400° and 450°C, except the #3 cylinder reading of 300°C. All fuel rack settings are between 21 and 22 millimetres, with the #3 rack at 17 mm. What will you do?
<b>A</b>	Reduce engine load of all the units except #3 cylinder and balance the load.
<b>B</b>	Stop the engine and change out the #3 fuel nozzle.
<b>C</b>	Stop the engine and adjust the #3-cylinder pump timing.
<b>D</b>	Increase the #3 rack setting and watch the exhaust temperature.
<b>E</b>	None of the above
<b>Correct Answer</b>	D
<b>Marks</b>	1

6	<b>Question Description</b>	Load line regulations are designed to ensure that a vessel has adequate structural strength and sufficient _____.
	<b>A</b>	lifesaving equipment
	<b>B</b>	stability
	<b>C</b>	mooring tension
	<b>D</b>	riser tension
	<b>E</b>	None of the above
	<b>Correct Answer</b>	B
	<b>Marks</b>	1

7	<b>Question Description</b>	Sacrificial zinc anodes are used on the saltwater side of diesel engine heat exchangers to _____.
	<b>A</b>	keep heat transfer surfaces shiny and clean
	<b>B</b>	reduce electrolytic action on heat exchanger metals
	<b>C</b>	prevent rapid accumulation of marine growth
	<b>D</b>	provide a protective coating on heat exchanger surfaces
	<b>E</b>	None of the above
	<b>Correct Answer</b>	B
	<b>Marks</b>	1

8	<b>Question Description</b>	The purpose of an air cooler in a supercharging system is to:
	<b>A</b>	Reduce temperature of supercharged air in order to condense and remove maximum possible moisture from the air prior entry to the engine
	<b>B</b>	Reduce the temperature of the supercharged air in order to increase the density & also to cool down below dew point to remove moisture from air prior entry to the engine
	<b>C</b>	Cool supercharged air to increase its density such that the dew point is not reached to avoid entry of moisture into the engine
	<b>D</b>	Cool supercharged air to increase its density and also to keep the peak temperature and exhaust gas temperature within limits
	<b>E</b>	None of the above
	<b>Correct Answer</b>	B
	<b>Marks</b>	1
9	<b>Question Description</b>	Which of the instrument measures propeller drop.
	<b>A</b>	Poker gauge
	<b>B</b>	Telescopic feeler gauge
	<b>C</b>	Trammel
	<b>D</b>	Propeller drop gauge
	<b>E</b>	None of the above
	<b>Correct Answer</b>	A
	<b>Marks</b>	1

10	<b>Question Description</b>	Crank web deflection readings will give a positive indication of
	<b>A</b>	Bearing shells shim dimensions
	<b>B</b>	Torsional stress deformation
	<b>C</b>	Slack thrust bearings
	<b>D</b>	Worn main bearing journals
	<b>E</b>	None of the above
	<b>Correct Answer</b>	D
	<b>Marks</b>	1

11	<b>Question Description</b>	The collision bulkhead is located _____.
	<b>A</b>	At the stern of the ship
	<b>B</b>	Between the passenger and cargo area
	<b>C</b>	On the bridge deck
	<b>D</b>	As the first watertight bulkhead aft of the bow in the ship.
	<b>E</b>	None of the above
	<b>Correct Answer</b>	D
	<b>Marks</b>	1

12	<b>Question Description</b>	What is a function of the wearing rings used in most centrifugal pumps?
	<b>A</b>	Absorb erosion of high velocity discharge stream
	<b>B</b>	Seal pump shaft against entry of air
	<b>C</b>	Isolate the discharge side from the suction side
	<b>D</b>	Dampen the turbulent discharge flow
	<b>E</b>	None of the above
	<b>Correct Answer</b>	C
	<b>Marks</b>	1

13	<b>Question Description</b>	The difference between the starboard and port drafts due to wind or seas is called _____.
	<b>A</b>	List
	<b>B</b>	Heel
	<b>C</b>	Trim
	<b>D</b>	flotation
	<b>E</b>	None of the above
	<b>Correct Answer</b>	B
	<b>Marks</b>	1



14	<b>Question Description</b>	Which of the following conditions need NOT be satisfied while discharging oil or oil mixtures from ships into the sea?
	<b>A</b>	The ship must be proceeding en route
	<b>B</b>	The ship must be at a distance of 12 nautical miles from the nearest land
	<b>C</b>	The oily mixture is processed through an oil filtering equipment as per Reg. 14 of Annex-1
	<b>D</b>	The oil content of the effluent without dilution does not exceed 15 ppm
	<b>E</b>	None of the above
	<b>Correct Answer</b>	B
	<b>Marks</b>	1

15	<b>Question Description</b>	Which Security Level requires minimum security measures and is the normal security level all ships and ports are supposed to operate.
	<b>A</b>	Level 1
	<b>B</b>	Level 2
	<b>C</b>	Level 3
	<b>D</b>	Level 4
	<b>E</b>	None of the above
	<b>Correct Answer</b>	A
	<b>Marks</b>	1

16	<b>Question Description</b>	The bitter end is the _____.
	<b>A</b>	looped end of a mooring cable
	<b>B</b>	end of the chain shackled to the anchor
	<b>C</b>	fixed end of the mooring cable fastened to the mooring winch drum
	<b>D</b>	end of the anchor chain fastened to the vessel
	<b>E</b>	None of the above
	<b>Correct Answer</b>	D
	<b>Marks</b>	1

17	<b>Question Description</b>	As per Indian Merchant Shipping Act, 1958, which of the following entries should be made in official log book of ships?
	<b>A</b>	Every case of illness, hurt or injury to a member of the crew
	<b>B</b>	Every case of death on board
	<b>C</b>	Every birth happening on board
	<b>D</b>	All of the above
	<b>E</b>	None of the above
	<b>Correct Answer</b>	D
	<b>Marks</b>	1

18	<b>Question Description</b>	The unloading system on an air compressor will _____.
	<b>A</b>	increase compressor discharge pressure on demand
	<b>B</b>	increase compressor operating speed as necessary
	<b>C</b>	allow the motor to turn the compressor opposed only by friction.
	<b>D</b>	reduce the compressor frictional load when starting
	<b>E</b>	None of the above
	<b>Correct Answer</b>	C
	<b>Marks</b>	1

19	<b>Question Description</b>	The maximum mean draft to which a vessel may be safely loaded is called _____.
	<b>A</b>	mean draft
	<b>B</b>	calculated draft
	<b>C</b>	deep draft
	<b>D</b>	load line draft
	<b>E</b>	None of the above
	<b>Correct Answer</b>	D
	<b>Marks</b>	1

20

<b>Question Description</b>	How many Security levels are there as per ISPS Code?
<b>A</b>	Two
<b>B</b>	Three
<b>C</b>	Four
<b>D</b>	Five
<b>E</b>	None of the above
<b>Correct Answer</b>	B
<b>Marks</b>	1

21

<b>Question Description</b>	Lube oil pumps taking suction from the sump of most small marine engines are usually _____.
<b>A</b>	of the diaphragm type
<b>B</b>	of the centrifugal type
<b>C</b>	of the positive displacement type
<b>D</b>	independently driven by electric motors
<b>E</b>	None of the above
<b>Correct Answer</b>	C
<b>Marks</b>	1

22	<b>Question Description</b>	ISPS does not apply to the following vessels.
	<b>A</b>	Cargo ships of 500 GT and above
	<b>B</b>	Passenger ships engaged on international voyages
	<b>C</b>	Mobile offshore drilling units
	<b>D</b>	Fishing vessels
	<b>E</b>	None of the above
	<b>Correct Answer</b>	D
	<b>Marks</b>	1

23	<b>Question Description</b>	The device used to retain the packing, that keeps water from entering the ship through the opening where the propeller shaft passes through the hull, is called a _____.
	<b>A</b>	packing cage
	<b>B</b>	seal gland
	<b>C</b>	stuffing box
	<b>D</b>	seal cage
	<b>E</b>	None of the above
	<b>Correct Answer</b>	C
	<b>Marks</b>	1

24	<b>Question Description</b>	Which is NOT a Statutory certificate to be carried onboard ship.
	<b>A</b>	Document Of Compliance
	<b>B</b>	Maximum Safe Manning Document.
	<b>C</b>	International Oil Pollution Certificate
	<b>D</b>	Safety Management Certificate
	<b>E</b>	None of the above
	<b>Correct Answer</b>	B
	<b>Marks</b>	1
25	<b>Question Description</b>	Which of the following statements represents the path of air flow passing through a typical two stage
	<b>A</b>	L.P. cylinder
	<b>B</b>	L.P. cylinder
	<b>C</b>	Air cleaner
	<b>D</b>	Air cleaner
	<b>E</b>	None of the above
	<b>Correct Answer</b>	D
	<b>Marks</b>	1

26	<b>Question Description</b>	Which of the following clearance readings should be taken and recorded in drydock?
	<b>A</b>	The clearances between the propeller blade tips and the hull.
	<b>B</b>	The clearances between the propeller hub and the fair water cone.
	<b>C</b>	The rudder bearing clearances
	<b>D</b>	The clearances between the stern tube packing gland and the retaining ring.
	<b>E</b>	None of the above
	<b>Correct Answer</b>	C
	<b>Marks</b>	1

27	<b>Question Description</b>	A thrust bearing is used with a propulsion diesel engine to _____.
	<b>A</b>	control axial movement of the crankshaft
	<b>B</b>	transmit engine thrust to the propeller shaft
	<b>C</b>	absorb vibrations in the propeller shafting
	<b>D</b>	prevent propeller thrust from being transmitted to the hull
	<b>E</b>	None of the above
	<b>Correct Answer</b>	A
	<b>Marks</b>	1

28	<b>Question Description</b>	When renewing only a portion of an entire hull plate with an insert plate, which of the listed guidelines should be followed
	<b>A</b>	The lines of new welding should, where possible, lie in existing lines of welding.
	<b>B</b>	The corners of the insert plate should be square.
	<b>C</b>	The insert plate should be at least 18mm thick
	<b>D</b>	The insert plate should cover at least one full frame space
	<b>E</b>	None of the above
	<b>Correct Answer</b>	D
	<b>Marks</b>	1
29	<b>Question Description</b>	The void space between two bulkheads is called
	<b>A</b>	Keel
	<b>B</b>	Cofferdam
	<b>C</b>	Floor
	<b>D</b>	Coffin
	<b>E</b>	None of the above
	<b>Correct Answer</b>	B
	<b>Marks</b>	1



30

<b>Question Description</b>	Why is it essential to renew turbocharger bearings after a preset number of hours of running even if the bearings are in seemingly perfect condition?
<b>A</b>	Because they are prone to failure due to prolonged exposure to high temperature conditions.
<b>B</b>	Because they are subject to cyclic loading and are prone to failure due to metal fatigue.
<b>C</b>	It is not essential to renew if condition monitoring suggests perfect condition.
<b>D</b>	Lube oil contamination is bound to occur and affect the condition of the bearings.
<b>E</b>	None of the above
<b>Correct Answer</b>	B
<b>Marks</b>	1

31

**Comprehension**

Read the passage and answer the following questions

Of all areas of learning the most important is the development of attitudes. Emotional reactions as well as logical thoughts process affect the behaviour of most people. The burnt child fears the fire” is one instance, another is the rise of despots like Hitler. Both these examples also point out the fact that attitudes stem from experiences. In the one case, it was direct and impressive, in the other it was indirect and cumulative. The Nazis were indoctrinated largely by the speeches they heard and the books they read. The class-room teacher in the elementary school is in a strategic position to influence attitudes.

**Question Description**

Identify from the options given below, a word or phrase that is a synonym of the term ‘cumulative’ in the sense it is used in the passage

**A**

unimpressive

**B**

immediate

**C**

snowballing

**D**

delayed

**E**

None of the above

**Correct Answer**

C

**Marks**

1

**Comprehension**

Read the passage and answer the following questions

Of all areas of learning the most important is the development of attitudes. Emotional reactions as well as logical thoughts process affect the behaviour of most people. The burnt child fears the fire” is one instance, another is the rise of despots like Hitler. Both these examples also point out the fact that attitudes stem from experiences. In the one case, it was direct and impressive, in the other it was indirect and cumulative. The Nazis were indoctrinated largely by the speeches they heard and the books they read. The class-room teacher in the elementary school is in a strategic position to influence attitudes.

**Question Description**

From the passage it appears that the term ‘attitudes’ means ----

**A**

fear of the burnt child

**B**

experiences of most people

**C**

emotional responses and logical thinking

**D**

thinking, feeling and behaviour

**E**

None of the above

**Correct Answer**

D

**Marks**

1

33

**Comprehension**

Read the passage and answer the following questions

Of all areas of learning the most important is the development of attitudes. Emotional reactions as well as logical thoughts process affect the behaviour of most people. The burnt child fears the fire” is one instance, another is the rise of despots like Hitler. Both these examples also point out the fact that attitudes stem from experiences. In the one case, it was direct and impressive, in the other it was indirect and cumulative. The Nazis were indoctrinated largely by the speeches they heard and the books they read. The class-room teacher in the elementary school is in a strategic position to influence attitudes.

**Question Description**

Identify from the options given below, the word or phrase that is markedly antonymous of ‘despot’

**A**

tyrant

**B**

monarch

**C**

democrat

**D**

autocrat

**E**

None of the above

**Correct Answer**

C

**Marks**

1

34

**Comprehension**

Read the passage and answer the following questions

Of all areas of learning the most important is the development of attitudes. Emotional reactions as well as logical thoughts process affect the behaviour of most people. The burnt child fears the fire” is one instance, another is the rise of despots like Hitler. Both these examples also point out the fact that attitudes stem from experiences. In the one case, it was direct and impressive, in the other it was indirect and cumulative. The Nazis were indoctrinated largely by the speeches they heard and the books they read. The class-room teacher in the elementary school is in a strategic position to influence attitudes.

**Question Description**

As per the passage, “The classroom teacher is in a strategic position to influence attitudes” because

**A**

Attitudes are shaped by speeches heard and books read

**B**

A teacher can shape attitudes through direct and indirect ways

**C**

Of all areas of learning developing attitudes is most important.

**D**

A teacher has direct as well as indirect access to the students

**E**

None of the above

**Correct Answer**

B

**Marks**

1

35

**Comprehension**

Read the passage and answer the following questions

Of all areas of learning the most important is the development of attitudes. Emotional reactions as well as logical thoughts process affect the behaviour of most people. The burnt child fears the fire” is one instance, another is the rise of despots like Hitler. Both these examples also point out the fact that attitudes stem from experiences. In the one case, it was direct and impressive, in the other it was indirect and cumulative. The Nazis were indoctrinated largely by the speeches they heard and the books they read. The class-room teacher in the elementary school is in a strategic position to influence attitudes.

**Question Description**

Attitudes of most people can be gauged by

**A**

their behaviour

**B**

past experiences

**C**

logical thought process

**D**

emotional responses

**E**

None of the above

**Correct Answer**

A

**Marks**

1

36

**Comprehension**

Read the passage and answer the following question:

A broad range of decisions, situations and problems may be encountered in the real estate field. An illustrative one is the question of whether to buy or lease. In some cases, of course, there may be no real choice. A company may have special requirements that make leasing difficult. Or they may be such a shortage of capital that owning is out of the question. But often such restrictions do not apply. Some managers may prefer to develop policies to guide decisions as to ownership or leasing of real property. The experiences of some businessmen bias them in favour of ownership. For example, a manager who has lost a desirable location through the expiration of a lease is likely to establish the policy that ownership is to be preferred in all but the most favourable lease situation. The company which uses its location extensively in advertising and public relation efforts is apt to favour ownership very strongly against leasing.

**Question Description**

Select a word or phrase from the passage which is not necessarily confined to 'real estate'

**A**

capital

**B**

real property

**C**

leasing

**D**

ownership

**E**

None of the above

**Correct Answer**

A

**Marks**

1

37

**Comprehension**

Read the passage and answer the following question:

A broad range of decisions, situations and problems may be encountered in the real estate field. An illustrative one is the question of whether to buy or lease. In some cases, of course, there may be no real choice. A company may have special requirements that make leasing difficult. Or they may be such a shortage of capital that owning is out of the question. But often such restrictions do not apply. Some managers may prefer to develop policies to guide decisions as to ownership or leasing of real property. The experiences of some businessmen bias them in favour of ownership. For example, a manager who has lost a desirable location through the expiration of a lease is likely to establish the policy that ownership is to be preferred in all but the most favourable lease situation. The company which uses its location extensively in advertising and public relation efforts is apt to favour ownership very strongly against leasing.

**Question Description**

From the options given below, select the one which is obviously used in the passage with more than one meaning

**A**

leasing

**B**

real

**C**

capital

**D**

policy

**E**

None of the above

**Correct Answer**

B

**Marks**

1



38

**Comprehension**

Read the passage and answer the following question:

A broad range of decisions, situations and problems may be encountered in the real estate field. An illustrative one is the question of whether to buy or lease. In some cases, of course, there may be no real choice. A company may have special requirements that make leasing difficult. Or they may be such a shortage of capital that owning is out of the question. But often such restrictions do not apply. Some managers may prefer to develop policies to guide decisions as to ownership or leasing of real property. The experiences of some businessmen bias them in favour of ownership. For example, a manager who has lost a desirable location through the expiration of a lease is likely to establish the policy that ownership is to be preferred in all but the most favourable lease situation. The company which uses its location extensively in advertising and public relation efforts is apt to favour ownership very strongly against leasing.

**Question Description**

As per the passage, a major problem encountered with regard to real estate is

**A**

to make a wide range of decisions

**B**

having no real choice

**C**

the choice of whether to buy or lease

**D**

shortage of capital

**E**

None of the above

**Correct Answer**

C

**Marks**

1

39

**Comprehension**

Read the passage and answer the following question:

A broad range of decisions, situations and problems may be encountered in the real estate field. An illustrative one is the question of whether to buy or lease. In some cases, of course, there may be no real choice. A company may have special requirements that make leasing difficult. Or they may be such a shortage of capital that owning is out of the question. But often such restrictions do not apply. Some managers may prefer to develop policies to guide decisions as to ownership or leasing of real property. The experiences of some businessmen bias them in favour of ownership. For example, a manager who has lost a desirable location through the expiration of a lease is likely to establish the policy that ownership is to be preferred in all but the most favourable lease situation. The company which uses its location extensively in advertising and public relation efforts is apt to favour ownership very strongly against leasing.

**Question Description**

Ownership may not be preferred by a company that

**A**

makes extensive use of location

**B**

has shortage of capital

**C**

has requirements that make leasing difficult

**D**

has lost a location due to expiry of lease

**E**

None of the above

**Correct Answer**

B

**Marks**

1

40

<b>Comprehension</b>	<p>Read the passage and answer the following question:</p> <p>A broad range of decisions, situations and problems may be encountered in the real estate field. An illustrative one is the question of whether to buy or lease. In some cases, of course, there may be no real choice. A company may have special requirements that make leasing difficult. Or they may be such a shortage of capital that owning is out of the question. But often such restrictions do not apply. Some managers may prefer to develop policies to guide decisions as to ownership or leasing of real property. The experiences of some businessmen bias them in favour of ownership. For example, a manager who has lost a desirable location through the expiration of a lease is likely to establish the policy that ownership is to be preferred in all but the most favourable lease situation. The company which uses its location extensively in advertising and public relation efforts is apt to favour ownership very strongly against leasing.</p>
<b>Question Description</b>	As per the passage, the decision with regard to owning property is often based on
<b>A</b>	the policies of managers
<b>B</b>	the foresight of managers
<b>C</b>	the restrictions on the company
<b>D</b>	the experiences of losing leased property
<b>E</b>	None of the above
<b>Correct Answer</b>	D
<b>Marks</b>	1

41 **Question Description** What is the theme of World Oceans Day 2022?

**A** Innovation for a Sustainable Ocean

**B** Ocean: Life and livelihoods

**C** Gender and the Ocean

**D** Revitalisation: Collective Action for the Ocean

**E** None of the above

**Correct Answer** D

**Marks** 1

42 **Question Description** National Maritime Day of India falls on

**A** April 5

**B** June 5

**C** October 5

**D** September 5

**E** None of the above

**Correct Answer** A

**Marks** 1

43

<b>Question Description</b>	Which year has Google Lens launched on the desktop through Google Chrome?
<b>A</b>	2022
<b>B</b>	2020
<b>C</b>	2021
<b>D</b>	2019
<b>E</b>	None of the above
<b>Correct Answer</b>	C
<b>Marks</b>	1

44

<b>Question Description</b>	Tripitakas are sacred books of
<b>A</b>	Buddhists
<b>B</b>	Hindus
<b>C</b>	Jains
<b>D</b>	Christianity
<b>E</b>	None of the above
<b>Correct Answer</b>	A
<b>Marks</b>	1

45	<b>Question Description</b>	What is the theme of the 'World Environment Day 2022'?
	<b>A</b>	50th Environment Day
	<b>B</b>	Only One Earth
	<b>C</b>	Live with the Nature
	<b>D</b>	Invest in our Planet
	<b>E</b>	None of the above
	<b>Correct Answer</b>	B
	<b>Marks</b>	1

46	<b>Question Description</b>	Who has inaugurated North India's first Industrial Biotech Park at Kathua in J&K?
	<b>A</b>	Narendra Modi
	<b>B</b>	Manoj Sinha
	<b>C</b>	Jitendra Singh
	<b>D</b>	Rajnath Singh
	<b>E</b>	None of the above
	<b>Correct Answer</b>	C
	<b>Marks</b>	1

47	<b>Question Description</b>	Central Arid Zone Research Institute is located in
	<b>A</b>	Bihar
	<b>B</b>	Gujarat
	<b>C</b>	Rajasthan
	<b>D</b>	Madhya Pradesh
	<b>E</b>	None of the above
	<b>Correct Answer</b>	C
	<b>Marks</b>	1

48	<b>Question Description</b>	Which city is called 'White City' of Rajasthan?
	<b>A</b>	Bihar
	<b>B</b>	Jaipur
	<b>C</b>	Udaipur
	<b>D</b>	Jodhpur
	<b>E</b>	None of the above
	<b>Correct Answer</b>	C
	<b>Marks</b>	1

49 **Question Description** The 'Cannes Award' is given for excellence in which field?

**A** Films

**B** Journalism

**C** Literature

**D** Economics

**E** None of the above

**Correct Answer** A

**Marks** 1

50 **Question Description** Decibel is the unit for

**A** speed of light

**B** radio wave frequency

**C** intensity of sound

**D** intensity of heat

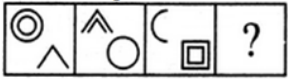
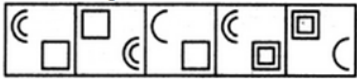
**E** None of the above

**Correct Answer** C

**Marks** 1



51	<b>Question Description</b>	What will be the addition of the third digit from the right end and the fourth digit from the left end of the number '768395241' after arranging all its digits in descending order?
	<b>A</b>	8
	<b>B</b>	12
	<b>C</b>	17
	<b>D</b>	15
	<b>E</b>	None of the above
	<b>Correct Answer</b>	E
	<b>Marks</b>	1

52	<b>Question Description</b>	Select a suitable figure from the Answer Figures that would replace the question mark (?). <b>Problem Figures:</b>  <b>Answer Figures:</b> 
	<b>A</b>	1
	<b>B</b>	2
	<b>C</b>	3
	<b>D</b>	4
	<b>E</b>	None of the above
	<b>Correct Answer</b>	B
	<b>Marks</b>	1

53

**Question Description**

Directions: Study the following information carefully and answer the questions given beside.

In a certain code language,

'Reach Is For Stars' is written as 'surdmolp'

'Nothing Is Out Of Reach' is written as 'ka su hu lklp'

'For Love Of Life' is written as 'lkmo go ma'

'Nothing Like Life Is' is written as 'lp go hu ne'

Which of the following is the code for 'Love Like Stars' in the given code language?

**A**

ma go lp

**B**

lkrd ne

**C**

ne sumo

**D**

rd ne ma

**E**

None of the above

**Correct Answer**

D

**Marks**

1

54

**Question Description**

Ankit, Ankush, Amjad, Akash, Akshay, Ashish, Ashad and Arman, were sitting around a circular table, facing towards the centre. These persons were playing cards and have won a different amount of money.

Amjad was sitting neighboring Ankush and Ashish and won Rs. 40. The person, who was sitting opposite to the person neighboring Ankit, won Rs. 30. One of the persons won Rs. 50. Ankush was sitting third to the right of the person, who won the highest amount. Ankit was sitting exactly opposite to the one, who won the highest amount. Every person won at least Rs. 20. Sum of the money won by Ashad and Arman was more than the money won by Ankush but less than the one who won the highest amount. The sum of the amount won by Ankit and his neighbors was Rs. 200. Ankit won the less money than his neighbors. Akash won Rs. 80, and was not an immediate neighbour of the one who won highest amount of money. Ankush and his neighbours and the person sitting opposite to him did not win the least amount of money. Arman won more money than only one person. One of the persons won Rs. 20. The person sitting opposite to Amjad won Rs. 60 which is half of the sum of the amount won by the ones, who won the highest and the lowest amount of money.

How many person(s) were sitting between the ones who won the highest amount and the least amount, when counted from the left of the one who won the least amount?

<b>A</b>	None
<b>B</b>	One
<b>C</b>	Two
<b>D</b>	Three
<b>E</b>	None of the above
<b>Correct Answer</b>	A
<b>Marks</b>	1

55

**Question Description**

Running at the same constant rate, 6 identical machines can produce a total of 270 bottles per minute. At this rate, how many bottles could 10 such machines produce in 4 minutes?

**A**

648

**B**

1800

**C**

2700

**D**

10800

**E**

None of the above

**Correct Answer**

B

**Marks**

1

56

**Question Description**

Directions: Study the following information carefully and answer the questions given below:

Twelve persons are sitting in two parallel rows containing six persons each, in such a way that there is an equal distance between adjacent persons. In row 1 – Joshi, Jaya, Jeet, Jamal, Juber and Jina are seated and all of them are facing south. In row 2 – Prem, Pinu, Pal, Punj, Poran and Pooja are seated and all of them are facing north. Therefore, in the given seating arrangement each member seated in a row faces another member of the other row.

Only one person sits between Jaya and Jina. Joshi sits third to the left of Juber. Neither Prem nor Poran faces Juber or Joshi. Prem does not sit at an extreme end. Jeet does not face Prem and Jeet does not sit at an extreme end of the line. Prem sits second to the right of Poran. Only one person sits between Pooja and Pal. Neither Joshi nor Juber sit at extreme end of the line. Pooja is not an immediate neighbour of Pinu and Prem does not face Jina. Neither Pooja nor does Pal face Juber. Pal does not sit at the extreme end.

How many person(s) sit(s) between Juber and Joshi?

**A**

None

**B**

One

**C**

Two

**D**

Three

**E**

None of the above

**Correct Answer**

C

**Marks**

1

57	<b>Question Description</b>	Statements: $A = B \geq C > D \leq E$ , $K < L \geq N = E$ , $F > G \geq B > I = J$ Conclusions: I. $D < L$ , II. $D = L$
	<b>A</b>	Neither C1 nor C2 follows
	<b>B</b>	Only C1 follows
	<b>C</b>	Both C1 and C2 follow
	<b>D</b>	Either C1 or C2 follows
	<b>E</b>	None of the above
	<b>Correct Answer</b>	D
	<b>Marks</b>	1

58	<b>Question Description</b>	$225 : 12 : 435 : ?$
	<b>A</b>	12
	<b>B</b>	20
	<b>C</b>	25
	<b>D</b>	19
	<b>E</b>	None of the above
	<b>Correct Answer</b>	D
	<b>Marks</b>	1

59

**Question Description**

Select the missing number from the given alternatives:

<b>5</b>	<b>3</b>	<b>6</b>
<b>7</b>	<b>20</b>	<b>?</b>
<b>9</b>	<b>21</b>	<b>17</b>
<b>38</b>	<b>?</b>	<b>47</b>

**A**

43,32

**B**

55,65

**C**

43,48

**D**

43,55

**E**

None of the above

**Correct Answer**

D

**Marks**

1

60

**Question Description**

Divya started from her house at 6:30 AM and travelled some distance till 7:30 AM. After covering 75% of that distance further, she found that she had covered 75% of total distance. Find the fraction of the total distance travelled by her by 8:30 AM.

(Given: She travels total distance with a constant speed)

**A** $3/7$ **B** $4/7$ **C** $6/7$ **D** $2/3$ **E**

None of the above

**Correct Answer**

C

**Marks**

1



61

**Question Description**

The following questions are based on the two digit numbers given below:

91 , 82 , 64 , 49 , 81

If each number is multiplied by 5, what will be the sum of the first digit of the each of the numbers?

**A**

17

**B**

21

**C**

15

**D**

16

**E**

None of the above

**Correct Answer**

A

**Marks**

1

62

**Question Description**

7, 9, 12, 48, ?, 890

**A**

128

**B**

190

**C**

172

**D**

168

**E**

None of the above

**Correct Answer**

C

**Marks**

1

63

**Question Description**

Preet's family had 6 members Preet, Geet, Shiva, Roop, Daya and Moni. Each of them was related to Preet in some manner: Mother, Father, Sister, Wife and Brother. They were seated in a row, facing east. They were aged differently. It is known that any child and his/her spouse would be younger to his/her parents. Any husband would not necessarily be elder to his wife.

Preet's wife was 32 years old.

Preet's father was 7 years younger than Preet's mother.

Geet was 29 years old and was to the immediate left of Preet's brother.

Daya was seated at one of the extreme ends at a gap of 3 from Preet's father.

Preet's father was to the immediate right of the one who was 30 years old.

Daya was 33 years elder to Moni.

Preet was 3rd to the left of his sister.

The one who was 34 years old was neighboring Daya.

Roop was to the immediate left of Moni.

Who among the following is the youngest in the family?

**A** Preet

**B** Preet's wife

**C** Preet's sister

**D** Shiva

**E** None of the above

**Correct Answer** C

**Marks** 1

64

**Question Description**

palette	easel	brush
textbook	lesson plan	?

**A**

artist

**B**

teacher

**C**

report card

**D**

paint

**E**

None of the above

**Correct Answer**

C

**Marks**

1

65

**Question Description**

The distance between N and P is 50 m and that between Q and R is 40 m. Q is to the west of R, which is to the east of N at a distance of 70 m. P is to the west or northwest or north of Q.  
If Q is to the south of P, what is the distance between P and Q?

**A**

40m

**B**

35m

**C**

80m

**D**

20m

**E**

None of the above

**Correct Answer**

A

**Marks**

1

66

**Question Description**

A man is facing west. He turns  $45^\circ$  in the clockwise direction and then another  $180^\circ$  in the same direction and then  $270^\circ$  in the anti-clockwise direction. Which direction is he facing now?

**A**

South

**B**

North-west

**C**

West

**D**

South-west

**E**

None of the above

**Correct Answer**

D

**Marks**

1

67

**Question Description**

Find the missing numbers

5	4	3	?	23
6	2	5	4	38
12	3	4	1	?

**A**

2 and 51

**B**

4 and 40

**C**

2 and 10

**D**

8 and 25

**E**

None of the above

**Correct Answer**

A

**Marks**

1

68

**Question Description**

Which number replaces the question mark?

2	7	17
3	11	19
5	13	?

**A**

25

**B**

41

**C**

18

**D**

23

**E**

None of the above

**Correct Answer**

D

**Marks**

1

69

**Question Description**

In the following question, a matrix of certain characters is given. These characters follow a certain trend, row-wise or column-wise. Find out this trend and choose the missing character accordingly

13	12	5
17	15	8
25	24	?
29	21	20

**A**

7

**B**

9

**C**

11

**D**

15

**E**

None of the above

**Correct Answer**

A

**Marks**

1

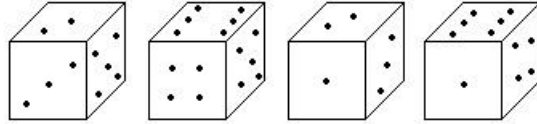
70

<b>Question Description</b>	When Anup saw Sandeep, he recalled, "He is the son of the father of my daughter's mother." Who is Sandeep to Anup?
<b>A</b>	Brother-in-law
<b>B</b>	Brother
<b>C</b>	Cousin
<b>D</b>	Uncle
<b>E</b>	None of the above
<b>Correct Answer</b>	A
<b>Marks</b>	1

71

**Question Description**

How many points will be on the face opposite to in face which contains 2 points?

**A**

1

**B**

5

**C**

4

**D**

6

**E**

None of the above

**Correct Answer**

D

**Marks**

1



72

**Question Description**

Seven people – A, B, C, D, E, F and G – are having different hobbies, viz., Travelling, Reading, Dancing, Painting, Sculpting, Singing and Pottery making, but not necessarily in the same order. Each of them belong to different State, viz., Punjab, Odisha, Kerala, Rajasthan, Maharashtra, Gujarat and Karnataka, but not necessarily in the same order. A belongs to Maharashtra. D likes pottery making. The person who likes sculpting is from the State of Odisha. The person who likes dancing is from the State of Gujarat. F does not belong to Gujarat, Odisha, Punjab or Rajasthan. F does not like singing, reading or painting. B does not belong to Kerala, Odisha, Punjab or Rajasthan. B does not like painting, travelling, reading or singing. C does not like sculpting and he is not from Rajasthan or Punjab. Neither D nor G belongs to Punjab. A does not like reading. The person from Kerala likes singing. Who among the following likes singing?

**A**

A

**B**

C

**C**

E

**D**

G

**E**

None of the above

**Correct Answer**

B

**Marks**

1

73

**Question Description**

For the word given on the top of the table, match the dictionary definitions given in the left hand column (A,B,C,D) with their corresponding usage given in the right hand column (EFGH). Out of the four choices given below the table, identify the one that has all definitions and usage correctly matched and mark its choice as your answer.

Up

A	towards or in a higher place	E	Are the children still up?
B	out of bed	F	Ever since they started the business, it has been on the up and up.
C	improving and becoming more successful especially financially	G	I sat up when I heard the news.
D	into an upright or raised position	H	We trudged slowly up the hill.

A

A	B	C	D
E	H	G	F

B

A	B	C	D
H	E	G	F

74

C

A	B	C	D
E	H	F	G

D

A	B	C	D
H	E	F	G

E

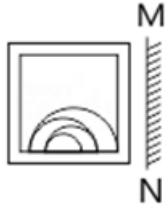
None of the above

**Correct Answer**

D

Question Description

Mirror images



A



B



C



D



A

A

B

B

C

C

75

**Question Description**

There is a certain relationship between two given pair on both side of ':' . One word is given on another side of ':' while another word is to be found from the given options, having the same relation with this word as the words of the given pair . Choose the correct word from the following options.

Tectonics : Building : : Taxidermy : ?

**A**

Classification

**B**

Conserving

**C**

Stuffing

**D**

Collecting

**E**

None of the above

**Correct Answer**

C

**Marks**

1