

Computer Based Examination System

Exported On *	2023/10/23 11:33:02
Title *	Question Paper Answer Key
OES Exam *	GPSC0920230104 / Pre Screening of Junior Scale Officer(Deputy Superintendent of Police)_4/ Completed / 2023-10-22

1

Comprehension

Read the following passage and answer the questions below:

A list of articles lost by railway travellers and now on sale at a great London station has been published, and many people who read it have been astonished at the absent-mindedness of their fellows. If statistical records were available on the subject, however, I doubt whether it would be found that absent mindedness is common. It is the efficiency rather than inefficiency of human memory that compels my wonder. Modern man remembers even telephone numbers. He remembers the address of his friends. He remembers that dates of good vintages. He remembers appointments for lunch and dinner. His memory is crowded with the names of actors and actresses and crickets and footballers and murderers. He can tell you what the weather was like in a long-past august and the name of the provincial hotel at which he had a vile meal during the summer.

Question Description

The phrase "good vintages" means

A

advantages

B

spurious liquor

C

wines made in a particular year

D

old fruit-bearing vines

E

None of the above

Correct Answer

C

Marks

1

2

Comprehension

Read the following passage and answer the questions below:

A list of articles lost by railway travellers and now on sale at a great London station has been published, and many people who read it have been astonished at the absent-mindedness of their fellows. If statistical records were available on the subject, however, I doubt whether it would be found that absent mindedness is common. It is the efficiency rather than inefficiency of human memory that compels my wonder. Modern man remembers even telephone numbers. He remembers the address of his friends. He remembers that dates of good vintages. He remembers appointments for lunch and dinner. His memory is crowded with the names of actors and actresses and crickets and footballers and murderers. He can tell you what the weather was like in a long-past august and the name of the provincial hotel at which he had a vile meal during the summer.

Question Description

The passage suggests that even if data were available on forgetfulness, it would be deduced that absent-mindedness is not quite

A

uncommon

B

common

C

reasonable

D

rare

E

None of the above

Correct Answer

B

Marks

1

3

Comprehension

Read the following passage and answer the questions below:

A list of articles lost by railway travellers and now on sale at a great London station has been published, and many people who read it have been astonished at the absent-mindedness of their fellows. If statistical records were available on the subject, however, I doubt whether it would be found that absent mindedness is common. It is the efficiency rather than inefficiency of human memory that compels my wonder. Modern man remembers even telephone numbers. He remembers the address of his friends. He remembers that dates of good vintages. He remembers appointments for lunch and dinner. His memory is crowded with the names of actors and actresses and crickets and footballers and murderers. He can tell you what the weather was like in a long-past august and the name of the provincial hotel at which he had a vile meal during the summer.

Question Description

The speaker in the passage is impressed by the -----

A

human mind that forgets unpleasant things

B

sheer competence of the human mind

C

universality of forgetfulness

D

quantum of articles forgotten by people

E

None of the above

Correct Answer

B

Marks

1

4

Comprehension

Read the following passage and answer the questions below:

A list of articles lost by railway travellers and now on sale at a great London station has been published, and many people who read it have been astonished at the absent-mindedness of their fellows. If statistical records were available on the subject, however, I doubt whether it would be found that absent mindedness is common. It is the efficiency rather than inefficiency of human memory that compels my wonder. Modern man remembers even telephone numbers. He remembers the address of his friends. He remembers that dates of good vintages. He remembers appointments for lunch and dinner. His memory is crowded with the names of actors and actresses and crickets and footballers and murderers. He can tell you what the weather was like in a long-past august and the name of the provincial hotel at which he had a vile meal during the summer.

Question Description

Find a word or phrase in the passage that means “extremely unpleasant”

A

provincial

B

efficiency

C

vile

D

inefficiency

E

None of the above

Correct Answer

C

Marks

1

5

Comprehension

Read the following passage and answer the questions below:

A list of articles lost by railway travellers and now on sale at a great London station has been published, and many people who read it have been astonished at the absent-mindedness of their fellows. If statistical records were available on the subject, however, I doubt whether it would be found that absent mindedness is common. It is the efficiency rather than inefficiency of human memory that compels my wonder. Modern man remembers even telephone numbers. He remembers the address of his friends. He remembers that dates of good vintages. He remembers appointments for lunch and dinner. His memory is crowded with the names of actors and actresses and crickets and footballers and murderers. He can tell you what the weather was like in a long-past august and the name of the provincial hotel at which he had a vile meal during the summer.

Question Description

Select the option that comes closest in meaning to the term “provincial” as used in the passage

A

far from the capital

B

of a large stretch of the countryside

C

closed to new ideas or fashions

D

of a county

E

None of the above

Correct Answer

D

Marks

1

6

Comprehension

Most malnutrition is invisible. Consistent undernutrition, together with bouts of infection and diarrhoea, can retard growth so gradually as to go unnoticed by the mother. Unless a child is seriously underweight or shows obvious signs of malnutrition (listlessness, discoloured hair, irritability, frequent crying, distended stomach) his condition of undernutrition may not be visible to the mother. For timely prevention of malnutrition, the UNICEF has been using the simple inexpensive method of growth monitoring charts which helps mothers whether or not their children are growing and gaining weight correctly and thus can be an effective aid to sound child health and nutrition. The first requirement for children and adults who are undernourished and living at subsistence level is adequate quantity of food. The next is nutritious food, containing all the elements necessary to support life and maintain good health.

Question Description

Identify the original full form of UNICEF from the options given below

A

United Nations International Cultural Economic Forum

B

United National Cultural Economic Federation

C

United Nations International Children's Emergency Fund

D

United Nations Intellectual Cultural Economic Foundation

E

None of the above

Correct Answer

C

Marks

1

7

Comprehension	Most malnutrition is invisible. Consistent undernutrition, together with bouts of infection and diarrhoea, can retard growth so gradually as to go unnoticed by the mother. Unless a child is seriously underweight or shows obvious signs of malnutrition (listlessness, discoloured hair, irritability, frequent crying, distended stomach) his condition of undernutrition may not be visible to the mother. For timely prevention of malnutrition, the UNICEF has been using the simple inexpensive method of growth monitoring charts which helps mothers whether or not their children are growing and gaining weight correctly and thus can be an effective aid to sound child health and nutrition. The first requirement for children and adults who are undernourished and living at subsistence level is adequate quantity of food. The next is nutritious food, containing all the elements necessary to support life and maintain good health.
Question Description	The passage implies that, when early signs of malnutrition go unnoticed, the immediate outcome is that it
A	hinders the prevention of malnutrition
B	leads to undernutrition in the long run
C	leads to the onset of infection and diarrhoea
D	conceals the condition of undernutrition
E	None of the above
Correct Answer	D
Marks	1

8

Comprehension

Most malnutrition is invisible. Consistent undernutrition, together with bouts of infection and diarrhoea, can retard growth so gradually as to go unnoticed by the mother. Unless a child is seriously underweight or shows obvious signs of malnutrition (listlessness, discoloured hair, irritability, frequent crying, distended stomach) his condition of undernutrition may not be visible to the mother. For timely prevention of malnutrition, the UNICEF has been using the simple inexpensive method of growth monitoring charts which helps mothers whether or not their children are growing and gaining weight correctly and thus can be an effective aid to sound child health and nutrition. The first requirement for children and adults who are undernourished and living at subsistence level is adequate quantity of food. The next is nutritious food, containing all the elements necessary to support life and maintain good health.

Question Description

The symptoms of listlessness, discoloured hair, irritability, frequent crying, distended stomach with underweight in a child indicate that the child is suffering from

A

subsistence

B

underweight

C

undernutrition

D

malnourishment

E

None of the above

Correct Answer

C

Marks

1

9

Comprehension

Most malnutrition is invisible. Consistent undernutrition, together with bouts of infection and diarrhoea, can retard growth so gradually as to go unnoticed by the mother. Unless a child is seriously underweight or shows obvious signs of malnutrition (listlessness, discoloured hair, irritability, frequent crying, distended stomach) his condition of undernutrition may not be visible to the mother. For timely prevention of malnutrition, the UNICEF has been using the simple inexpensive method of growth monitoring charts which helps mothers whether or not their children are growing and gaining weight correctly and thus can be an effective aid to sound child health and nutrition. The first requirement for children and adults who are undernourished and living at subsistence level is adequate quantity of food. The next is nutritious food, containing all the elements necessary to support life and maintain good health.

Question Description

Select from the following options the word or phrase from the passage that is synonymous with “to delay or slow down the development of something”.

A

distended

B

retard

C

malnutrition

D

bouts

E

None of the above

Correct Answer

B

Marks

1

10

Comprehension

Most malnutrition is invisible. Consistent undernutrition, together with bouts of infection and diarrhoea, can retard growth so gradually as to go unnoticed by the mother. Unless a child is seriously underweight or shows obvious signs of malnutrition (listlessness, discoloured hair, irritability, frequent crying, distended stomach) his condition of undernutrition may not be visible to the mother. For timely prevention of malnutrition, the UNICEF has been using the simple inexpensive method of growth monitoring charts which helps mothers whether or not their children are growing and gaining weight correctly and thus can be an effective aid to sound child health and nutrition. The first requirement for children and adults who are undernourished and living at subsistence level is adequate quantity of food. The next is nutritious food, containing all the elements necessary to support life and maintain good health.

Question Description

Select the suitable option that explains the term 'subsistence'.

A

a particular kind of matter having uniform properties

B

to continue to live or exist

C

minimal resources required to survive

D

food or drink regarded as nourishment

E

None of the above

Correct Answer

C

Marks

1

11

Question Description

Directions: The questions are based upon the following six 3-letter words.

TRE POK OWL ARE SIN UTE

If all the letters are arranged as per alphabetical order (within the word) then how many letters (in the English alphabet series) are between the middle letter of third word from right end and second word from left end?

A

5

B

8

C

0

D

9

E

None of the above

Correct Answer

D

Marks

1

12

Question Description	P, Q, R, S, T and U are six members of a family. R is the spouse of Q, U is the mother of T and S is the daughter of U. P's daughter is T and R's son is P. There are two couples in the family. Which one of the following is correct?
A	is the grandfather of T
B	is the grandmother of T
C	R is the mother of P.
D	T is the granddaughter of Q
E	None of the above
Correct Answer	D
Marks	1

13

Question Description

Hindi ought to be the official language of India. There is no reason of the government to spend money printing documents in difference languages, just to cater to people who cannot read/write Hindi. The government has better ways to spend tax payers' money. People across India should read/write Hindi or learn it at the earliest.

United Nations members contribute funds, proportionate to their population, for facilitating smooth functioning of the UN. By 2010, India, being the most populous nation on the planet, would contribute the maximum amount to the UN. Therefore, official language of United Nations should be changed to Hindi. Which of the following is true?

A

The point above contradicts the speaker's argument.

B

The point above is similar to speaker's argument.

C

The point above concludes speaker's argument.

D

The point above extends the speaker's argument

E

None of the above

Correct Answer

D

Marks

1

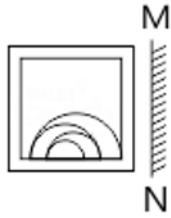
14

Question Description	If the order of the letters in the English alphabet is reversed and each letter represents the letter whose position it occupies, then which one of the following represents 'LUCKNOW'?
A	OGXPMLD
B	OGXQMLE
C	OFXPMLE
D	OFXPMLD
E	None of the above
Correct Answer	D
Marks	1

15

Question Description

Find Mirror images



A



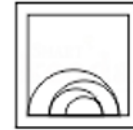
B



C



D



A

A

B

B

C

C

D

D

E

None of the above

Correct Answer

D

Marks

1

16

Question Description

Pick the odd word out.

A

Violet

B

Blue

C

yellow

D

White

E

None of the above

Correct Answer

D

Marks

1

17

Question Description

Each of the questions given below consists of a question followed by three statements. You have to study the question and the statements and decide which of the statement(s) is/are necessary to answer the question.

What is the speed of the train?

I. The train crosses a tree in 13 seconds.

II. The train crosses a platform of length 250 metres in 27 seconds.

III. The train crosses another train running in the same direction in 32 seconds.

A

I and II only

B

II and III only

C

I and III only

D

Any two of the three

E

None of the above

Correct Answer

A

Marks

1

18

Question Description	Generation Xers are those people born roughly between 1965 and 1981. As employees, Generation Xers tend to be more challenged when they can carry out tasks independently. This makes Generation Xers the most entrepreneurial generation in history. This paragraph best supports the statement that Generation Xers
A	Work Harder Than People From Other Generations.
B	Have A Tendency To Be Self-Directed Workers
C	Have An Interest In Making History
D	Tend To Work In Jobs That Require Risk-Taking Behavior.
E	None of the above
Correct Answer	B
Marks	1

19

Question Description	How many such pairs of letters are there in the word EXECUTION , each of which has as many letters between them in the word as they have between them in the English alphabet?
A	One
B	Two
C	Three
D	More than Three
E	None of the above
Correct Answer	D
Marks	1

20

Question Description

If the symbols followed by consonants interchange their positions within the group, then which element is third from the right end?

B@C7NR%5\$G6KM&4S#PU5

A. U

B. #

C. P

D. 5

A

A

B

B

C

C

D

D

E

None of the above

Correct Answer

B

Marks

1

21

Question Description

Directions: Study the following questions carefully and choose the right answer:

Statement : Postal rates have been increased to meet the deficit.

Assumptions :

I. The present rates are very low.

II. If the rates are not increased, the deficit cannot be met.

A

if only assumption I is implicit

B

if only assumption II is implicit

C

if either I or II is implicit

D

if neither I nor II is implicit

E

None of the above

Correct Answer

B

Marks

1

22

Question Description	There are five persons, P, Q, R, S and T each one of whom has to be assigned one task. Neither P nor Q can be assigned Task-1. Task-2 must be assigned to either R or S. In how many ways can the assignment be done?
A	6
B	12
C	18
D	24
E	None of the above
Correct Answer	D
Marks	1

23

Question Description	Arun's present age in years is 40% of Barun's. In another few years, Arun's age will be half of Barun's. By what percentage will Barun's age increase during this period?
A	20
B	10
C	15
D	25
E	None of the above
Correct Answer	A
Marks	1

24

Question Description

Choose the pair that best represents a similar relationship to the one expressed in the original pair of words.
DOMINANCE : HEGEMONY

A

romance : sympathy

B

furtherance : melancholy

C

independence : autonomy

D

tolerance : philanthropy

E

None of the above

Correct Answer

C

Marks

1

25

Question Description

Direction: In each of the following question, there is a certain relationship between two given pair on both side of ':' . One word is given on another side of ':' while another word is to be found from the given options, having the same relation with this word as the words of the given pair . Choose the correct word from the following options..

BFG : EIJ :: RVW : ?

A

UWY

B

UYZ

C

SWX

D

QUV

E

None of the above

Correct Answer

B

Marks

1

Question Description

Directions: Read the following information carefully and answer the questions given beside.

Ten guards from A to J are standing on ten gates of a pentagon shaped park. The gates are built such that the gates at the corners of the park are large and the gates at the edges of the park are small. The guards at the large gate are facing towards the center while the guards at the small gate are facing outside the center.

B is standing third to the right of E, who is standing at one of the large gates. C is on the immediate left of D. I is an immediate neighbor of B and stands third to the right of F. C is not adjacent to both F and B. A is facing towards the center. G faces outside and is not an immediate neighbor of I and C. Only 4 guards stand between A and H.

Four of the following five are alike in a certain way and thus form a group. Which of the following does not belong to the same group?

A

D

B

I

C

E

D

B

E

None of the above

Correct Answer

D

Marks

1

27

Question Description

Directions: Each of the following consists of a question and some statements given below it. You have to decide whether the data provided in the statements are sufficient to answer the question.

What is the code for 'win like never'?

Statement I: "record inning win" is coded as "fe gu pu" and "party like win" is coded as "ho sa fe".

Statement II: "never steal money" is coded as "ca mo pi" and "gamble money winner" is coded as "be pi ta".

Statement III: "never forget inning" is coded as "mo gu je" and "steal party tonight" is coded as "sa de ca".

A

If the data in statement I and II together is sufficient.

B

If the data in statement II and III together is sufficient.

C

If the data in all the statements together is necessary.

D

If the data in all the statements together is not sufficient.

E

None of the above

Correct Answer**C****Marks****1**

28

Question Description

A finishes a piece of work in 4 days. B takes double the time of A. C takes double the time of B and D takes double the time of C. The four of them are grouped into 2 pairs. One pair takes $\frac{2}{3}$ rd the time needed by the second pair. Who are the members of the first pair?

A

A, B

B

A, C

C

B, C

D

A, D

E

None of the above

Correct Answer

A

Marks

1

29

Question Description

Direction: In each of the following question, there is a certain relationship between two given pair on both side of '::' . One word is given on another side of '::' while another word is to be found from the given options, having the same relation with this word as the words of the given pair . Choose the correct word from the following options.

83 : 25 :: 29 : ?

A

44

B

49

C

40

D

63

E

None of the above

Correct Answer

B

Marks

1

30

Question Description

A telecom service provider engages male and female operators for answering 1000 calls per day. A male operator can handle 40 calls per day whereas a female operator can handle 50 calls per day. The male and the female operators get a fixed wage of Rs. 250 and Rs. 300 per day respectively. In addition, a male operator gets Rs. 15 per call he answers and a female operator gets Rs. 10 per call she answers. To minimize the total cost, how many male operators should the service provider employ assuming he has to employ more than 7 of the 12 female operators available for the job?

A

15

B

14

C

12

D

10

E

None of the above

Correct Answer

D

Marks

1

31

Question Description

500 men are arranged in an array of 10 rows and 50 columns according to their heights. Tallest among each row of all are asked to come out. And the shortest among them is A. Similarly after resuming them to their original positions, the shortest among each column are asked to come out. And the tallest among them is B. Now who is taller A or B ?

A

Only A

B

Only B

C

Both A and B are same

D

Neither A or B

E

None of the above

Correct Answer

C

Marks

1

32

Question Description

Each of the questions given below consists of a question followed by three statements. You have to study the question and the statements and decide which of the statement(s) is/are necessary to answer the question.

What is the speed of the boat in still water?

- I. It takes 2 hours to cover the distance between A and B downstream.
- II. It takes 4 hours to cover the distance between A and B upstream.

A

I alone sufficient while II alone not sufficient to answer

B

II alone sufficient while I alone not sufficient to answer

C

Either I or II alone sufficient to answer

D

Both I and II are not sufficient to answer

E

None of the above

Correct Answer

D

Marks

1

33

Question Description

Directions: In each question below are given some statements followed by some conclusions. You have to take the given statements to be true even if they seem to be at variance with commonly known facts. Read all the conclusions and then decide which of the given conclusions logically follows/follow from the given statements, disregarding commonly known facts.

Statements:

All floors are buildings.

All doors are buildings.

Some buildings are not houses.

Conclusions:

I. Some floors are not doors.

II. Some houses may not be buildings.

A

If only conclusion I follow

B

If only conclusion II follow

C

If neither conclusion I nor conclusion II follows

D

If both the conclusions follow

E

None of the above

Correct Answer**B****Marks****1**

34

Question Description

Each question presents a situation and asks you to make a judgment regarding that particular circumstance. Choose an answer based on given information.

Mrs. Jansen recently moved to Arizona. She wants to fill her new backyard with flowering plants. Although she is an experienced gardener, she isn't very well-versed in what plants will do well in the Arizona climate. Also, there is a big tree in her backyard making for shady conditions and she isn't sure what plants will thrive without much direct sunlight. Her favorite gardening catalog offers several backyard seed packages. Which one should Mrs. Jansen choose?

A

The Rainbow Collection is ideal for North-east gardens. It includes a variety of colorful perennials that thrive in cool, moist conditions.

B

The Greenhouse Collection will blossom year after year if planted in brightly lit locations and watered regularly.

C

The Treehouse Collection will provide lush green plants with delicate colorful flowers that thrive in shady and partially shady locations.

D

The Oasis Collection includes a variety of perennials that thrive in dry climates and bright sunlight.

E

None of the above

Correct Answer**C****Marks****1**

35

Question Description

Cheenu has a family of eight members. Bablu is the eldest male member of the family. Haryali is the daughter-in-law of Neelu and sister-in-law of Sonu and Anku. Apart from Cheenu and Bablu, only Sonu is a male member of the family. Anku is the aunt of Cheenu's two daughters Saba and Daya.

Who is the husband of Haryali?

A Bablu

B Sonu

C Cheenu

D Cannot be determined

E None of the above

Correct Answer C

Marks 1

36

Question Description	Ten new television shows appeared during the month of September. Five of the shows were sitcoms, three were hour-long dramas, and two were news-magazine shows. By January, only seven of these new shows were still on the air. Five of the shows that remained were sitcoms.
A	Only one of the news-magazine shows remained on the air.
B	Only one of the hour-long dramas remained on the air.
C	At least one of the shows that was cancelled was an hour-long drama.
D	Television viewers prefer sitcoms over hour-long dramas.
E	None of the above
Correct Answer	C
Marks	1

37

Question Description

Mr Ghosh recently acquired four companies named ANT, BAT,CAT and DAT. When the results of the companies for the year ending were placed before Mr. Ghosh, he found a few interesting things about them. While the profits of CAT and DAT were the same, the sales of CAT were the same as BAT, the profits of ANT were 10% of its sale whereas profits of BAT were 20% of its sales. While the total expenses of CAT were five times its profit, sales of DAT were three times its profit. The total expenses of CAT were Rs. 10 lakhs and of ANT were 10% less than those of CAT. Profits are defined as difference between sales and total expenses.

Which company had the lowest sales?

A

ANT

B

BAT

C

CAT

D

DAT

E

None of the above

Correct Answer

D

Marks

1

38

Question Description

There are eight members P, Q, R, S, T, U, V and W in a family. These eight persons belong to three different generations, such that there are three married couples, while two members are unmarried. Each couple has at least a child.

Further it is known that each of these eight persons works with a different company among A, B, C, D, E, F, G and H in any order. V and Ft are the only siblings in the family and U, W, R and S are of the same gender. W and V do not form a married couple.

The person who works with A is the mother of the person who works with F, who, in turn, is a female. V, does not work with E, and his daughter is S. R works with B. The person who works with G and the one who works with E belong to the same generation. The person who works with G is a female, whereas the person who works with E is a male. The person who works with C is the maternal grandfather of Q, who, in turn, works with D. T works with H.

Who among the following is the spouse of the person working with E?

A

R

B

S

C

W

D

The person works with E is unmarried.

E

None of the above

Correct Answer

B

Marks

1

39

Question Description	On what dates of April, 2001 did Wednesday fall?
A	1 st , 8 th , 15 th , 22 nd , 29 th
B	2 nd , 9 th , 16 th , 23 rd , 30 th
C	3 rd , 10 th , 17 th , 24 th
D	4 th , 11 th , 18 th , 25 th
E	None of the above
Correct Answer	D
Marks	1

40

Question Description

Directions: Read the following information carefully and answer the questions given beside.

O	M	I	Y	S	U	Q	N	D	A	B	E	T	R	L
5	@	9	%	&	*	7	/	!	3	9	0	#	=	8

I. If the word starts with a vowel and ends with a consonant then interchange the codes of first and second last letter.

II. If third and sixth letter of a word is a vowel, then change the codes of letters at such position with the letters just next to them in the given table.

III. If the word has not less than three vowels, then replace the codes of all the vowels with 5.

Note- If more than one condition is applicable to a single word then apply the conditions as per their ascending order of their serial number.

Find the code for word "Equity"?

A#755#% B57*5#% C5755#% D*7%5#%

A A

B B

C C

D D

41

Question Description

Refer to the data given below and answer the ques. That follows:

Cities A and B are in different time zones. A is located 3000 km east of B. The table below describes the schedule of an airline operating non-stop flights between A and B. All the times indicated are local and on the same day.

Departure		Arrival	
City	Time	City	Time
B	8:00 am	A	3:00 pm
A	4:00 pm	B	8:00 pm

Assume that planes cruise at the same speed in both directions. However, the effective speed is influenced by a steady wind blowing from east to west at 50 km per hour.

What is the time difference between A and B?

A 1 hour and 30 minutes

B 2 hours

C 2 hours and 30 minutes

D 1 hour

E None of the above

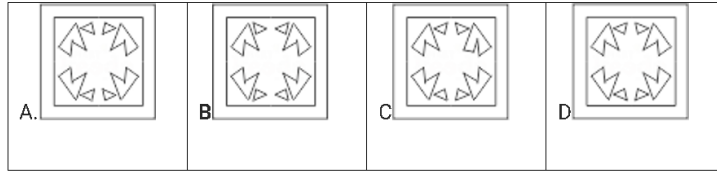
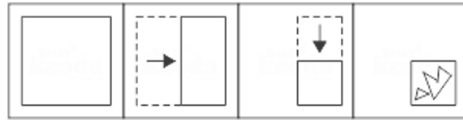
Correct Answer D

Marks 1

42

Question Description

Directions: A piece of a paper is folded and cut as shown below in the Question Figures. Indicate how it will appear when opened.



A

A

B

B

C

C

D

D

E

None of the above

Correct Answer

D

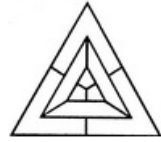
Marks

1

43

Question Description

What is the minimum number of colour pencils required to fill the spaces in the below figure with no two adjacent spaces have the same colour ?

**A**

5

B

2

C

3

D

6

E

None of the above

Correct Answer

3

Marks

1

44	Question Description	Six persons are playing a card game. Suresh is facing Raghubir who is to the left of Ajay and to the right of Pramod. Ajay is to the left of Dhiraj. Yogendra is to the left of Pramod. If Dhiraj exchanges his seat with Yogendra and Pramod exchanges with Raghubir, who will be sitting to the left of Dhiraj?
	A	Yogendra
	B	Raghubir
	C	Suresh
	D	Ajay
	E	None of the above
	Correct Answer	C
	Marks	1

45

Question Description

Directions: Read the following information carefully and answer the question given beside.

In a code language,

start walk stop diet is coded as 8% #21 3\$7 *6

walk rest start bite is coded as #9 *6 2@9 #21

stop work diet rest is coded as ^78 8% 3\$7 #9

bite rest start diet is coded as 2@9 #9 *6 3\$7

Find the code for 'work diet'?

A 3\$7 #9 B ^78 3\$7 C ^78 #9 D 3\$7 *6

A A

B B

C C

D D

E None of the above

Correct Answer B

Marks 1

46

Question Description

Find the missing Numbers

5	3	6
7	20	?
9	21	17
38	?	47

A 43, 32 B 5, 65 C 43, 48 D 43, 55

A

A

B

B

C

C

D

D

E

None of the above

Correct Answer

D

Marks

1

47

Question Description

For each of the words below, a contextual usage is provided. Pick the word from the alternatives given that is closest in the given context.

DOCILE - It was a rude shock to see Prem, who is usually docile, fighting ferociously.

A

Impudent

B

Obedient

C

Indignant

D

Brittle

E

None of the above

Correct Answer

B

Marks

1

48

Question Description

Directions: In these questions, relationship between different elements is shown in the statement. The statements are followed by two conclusions. Choose the correct answer given below:

Statements: $Y \geq P = O, P < R \leq J$

Conclusions: $R > Y, J > O$

A

Only conclusion I follows.

B

Only conclusion II follows.

C

Both conclusion I and II follow.

D

Neither conclusion I nor conclusion II follows.

E

None of the above

Correct Answer

B

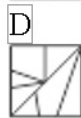
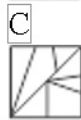
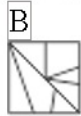
Marks

1

49

Question Description

Which Answer figure will complete the pattern in the figure.



A	A
B	B
C	C
D	D
E	None of the above
Correct Answer	A
Marks	1

50

Question Description

In each question below is given a statement followed by two courses of action numbered I and II. You have to assume everything in the statement to be true, then decide which of the two suggested courses of action logically follows for pursuing

Statement:

One of the problems facing the food processing industry is the irregular supply of raw material. The producers of raw material are not getting a reasonable price.

Course of Action:

- I. The government should regulate the supply of raw material to other industries also.
- II. The government should announce an attractive package to ensure regular supply of raw material for food processing industry.

A

If Only I Follows.

B

If Only II Follows.

C

If Either I Or II Follows.

D

If Neither I Nor II Follows.

E

None of the above

Correct Answer

B

Marks

1

51	Question Description	Which date of June 2099 among the following is Sunday?
	A	4
	B	5
	C	6
	D	7
	E	None of the above
	Correct Answer	D
	Marks	1

52	Question Description	How many times are the hands of a clock at right angle in a day?
	A	22
	B	24
	C	44
	D	48
	E	None of the above
	Correct Answer	C
	Marks	1

53

Question Description

A tank is filled by three pipes with uniform flow. The first two pipes operating simultaneously fill the tank in the same time during which the tank is filled by the third pipe alone. The second pipe fills the tank 5 hours faster than the first pipe and 4 hours slower than the third pipe. The time required by the first pipe is:

A

6 hours

B

10 hours

C

15 hours

D

30 hours

E

None of the above

Correct Answer

C

Marks

1

54

Question Description

Directions: Study the following information carefully and answer the given questions.

Seven persons A, B, C, D, E, F and G live in a seven story building. The bottom floor is numbered 1 and the floor above it is numbered 2 and so on. The topmost floor is numbered 7. All the persons are working with different shops, viz Liberty, Puma, Sonata, Titan, Reebok, Nike and Walmart but not necessarily in the same order.

- C lives on the third floor but does not work with Liberty shop.
- B does not work with Puma. The one who works with Walmart lives immediately below the person who works with Titan.
- F works with Sonata but lives neither on an even numbered floor nor immediately above the one who works at Liberty.
- The floor on which A lives is immediately above the floor on the which B lives. A does not work with Liberty shop.
- The one who works with Nike lives immediately below the one who works with Puma.
- D lives on floor no. 6. Neither A nor E works with Reebok.
- G works with Titan and lies on the topmost floor.

Who among the following lives on the first floor?

A The one who work with Reebok

B The one who works with Sonata

C The one who works with Puma

D Can't be determined

E None of the above

Correct Answer B

Marks 1

Question Description

Study the following questions carefully and choose the right answer:

Statement: If the retired Professors of the same Institutes are also invited to deliberate on restructuring of the organisation, their contribution may be beneficial to the Institute.

Courses of action:

I. Management may seek opinion of the employees before calling retired professors.

II. Management should involve experienced people for the systematic restructuring of the organisation.

A Only I follows

B Only II follows

C Either I or II follows

D Neither I nor II follows

E None of the above

Correct Answer B

Marks 1

56

Question Description	What are the next three numbers in the given series? 1 1 2 1 2 2 3 1 2 2 3 2 3 3 4 1 2 2 3 2 3 3 4 2 3 3 ?
A	443
B	344
C	343
D	434
E	None of the above
Correct Answer	D
Marks	1

Question Description

Directions: Read the following information carefully and answer the questions given beside.

Seven players viz. L,M,N,O,P,Q, and R of Volleyball were standing on a ground such that L was 10m to the north of R, who was 5m west of Q. M was 6m south of N, who was 8m east of R. P was 13m north of N and 4m east of O.

After sometime few of them changed their position, which will be denoted by adding ` to their names. For example - new position of L will be denoted as L`.

O moved 5m towards south and then turned left and moved 2m and stopped.

L moved 5m towards north-east and then moved 1m in north and stopped.

If Q moved 1m towards west then what is the straight distance between L` and Q`?

A

12m

B

15m

C

14m

D

17m

E

None of the above

Correct Answer

C

Marks

1

58

Question Description

In a class of 96 students, each student opts for at least one of the three subjects – Physics, Chemistry and Mathematics. It is also known that:

- i. The number of students who opt for Physics only is equal to the number of students who opt for Mathematics only and is also equal to twice the number of students who opt for both Mathematics and Physics but not Chemistry.
- ii. The number of students who opt for exactly two subjects is 25.
- iii. The number of students who opt for Chemistry is 31.
- iv. Among those who opt for Chemistry, 13 students opt for at least two subjects.

If the number of students who opt for Mathematics is the maximum among the three subjects, then what is the maximum possible number of students who opt for both Physics and Chemistry but not Mathematics?

A

5

B

6

C

7

D

Cannot be determined

E

None of the above

Correct Answer

A

Marks

1

59

Question Description

What number should replace the question mark?

AVIATOR = 6

FIXTURE = 9

WIZARDS = 1

DIVERSE = ?

A

2

B

3

C

4

D

5

E

None of the above

Correct Answer

C

Marks

1

60

Question Description

Study the following information carefully and answer the questions given below.

A word arrangement machine, when given a particular input, rearranges it following a particular rule. The following is the illustration of the input and the steps of arrangement:

Input: dare the name cast case for is there
Step I: is the name cast case for dare there
Step II: is for name cast case the dare there
Step III: is for the cast case name dare there
Step IV: is for the case cast name dare there
Step V: is for the case cast dare name there

If following is the step III of an input, what will be its step I?

Step III: an is for future form not sin
a. an form future for is not sin
b. an not sin future form is for
c. an for is future form not sin
d. Cannot be determined

A a

B b

C c

D d

E None of the above

Correct Answer D